





## Handmade in Holland

The story of RB73 is a story of passion for fire. But also of beautiful and timeless products. Handmade by professionals with love for the product. Enjoy beautiful moments, enjoy staying outside! Think of warm summer evenings, but also throughout the rest of the year there are often beautiful days when an outdoor fireplace can be used to give that wonderful extra warmth and atmosphere on your terrace.

The fires have glass fronted doors so you do not suffer from smoke, ash or sparks on the terrace. The CorTen steel gives the fires a solid appearance and long life. The rusting process is different for each fireplace and therefore every fireplace is unique.

As the Scandinavians say, “No terrace without a fire .....”



*Have you ever noticed  
that if you are gathered  
around a fire with  
several people you  
automatically look into  
the fire and that it doesn't  
matter if there is a silence.....*

*Raoul*





**RENY**  
SINCE 1975

All fireplaces are made by Reny. Reny is a Dutch family business based in Duizel (the Netherlands).

The models are completely designed, developed and produced in-house. A team of professionals with a passion for wood stoves has the most modern systems and machines at its disposal for this. This way we can guarantee the quality, the commitment and service that we want to deliver.



PIQUIA





# PIQUIA

The Piquia model is a compact CorTen steel wood stove with an industrial look. This terrace stove has a galvanized steel door handle and stainless steel lock bolts around, both above and below the door. These contrast well with the warm rustic plate material. At the back side of the fireplace there is a small ash tray.













QUARUBA L







## QUARUBA L

The Quaruba is available in 3 different sizes; Large, XL and XXL. Model L is the smallest version. It's a stylish wood stove with an elegant appearance designed for outdoor use. It's 85 cm high and the glass has square dimensions. This cube-shaped terrace stove has an unique modular construction and is therefore assembled as desired with 1 ( glass fronted door) to 4 glass panels. The door catch is located between the door panel and the right leg. The version with 4-wheels is easy moved. In addition, the platform for the wheels can also be used as storage for firewood.







QUARUBA XL





# QUARUBA XL

The Quaruba is available in 3 different sizes; Large, XL and XXL. Model X is the middle of the 3. With it's height of 95 cm it has beautiful high windows so you have a good view on the fire. It's an elegant wood stove with an industrial appearance. This cube-shaped terrace stove has a unique modular construction and is therefore assembled as desired with 1 (door) to 4 glass panels. The door closure is cleared between the door panel and the right leg. The version with 4-wheel flooring is easy moveable. In addition, the platform can also be used as storage for the first stock of firewood.









QUARUBA XXL





# QUARUBA XXL

The Quaruba is available in 3 different sizes; Large, XL and XXL. Model XXL is the largest of the bunch. It's a real eye catcher on the terrace with his height of 105 cm. Because of the large surface you have a nice view of the flames. It's a stylish designed wood stove with an industrial look. This cube-shaped terrace stove has a unique modular construction and is therefore assembled as desired with 1 (door) to 4 glass panels. The door closure is cleared between the door panel and the right leg. The version with 4-wheel flooring is easy moveable. In addition, the platform can also be used as storage for the first stock of firewood.













BIJUGA





# BIJUGA

The Bijuga model is a robust CorTen steel outdoor stove. The striking timeless design combines tight lines and surfaces with industrial accents. The sheet material is folded out on the connecting seams and all bolts and nuts are visible. The hardwood merbau parts (knobs and push-bar) not only provide beautiful details but are also very practical for operation because they do not get too hot. The 2-wheel version with a push-bar on the rear can easily be moved. The emblem on the hood is a symbol for the collaboration with Atelier Rene Knip, the designer of this stove.







### **Design Studio Rene Knip**

The design is from Atelier Rene Knip. Rene has a distinctive view on stoves. The user and the function of the fireplace are central. His designs have a distinct design and are characterized by balanced proportions in size, a beautiful look and the use of high quality materials and beautiful details.





# WOOD STORAGE BRUGES







## WOOD STORAGE BRUGES

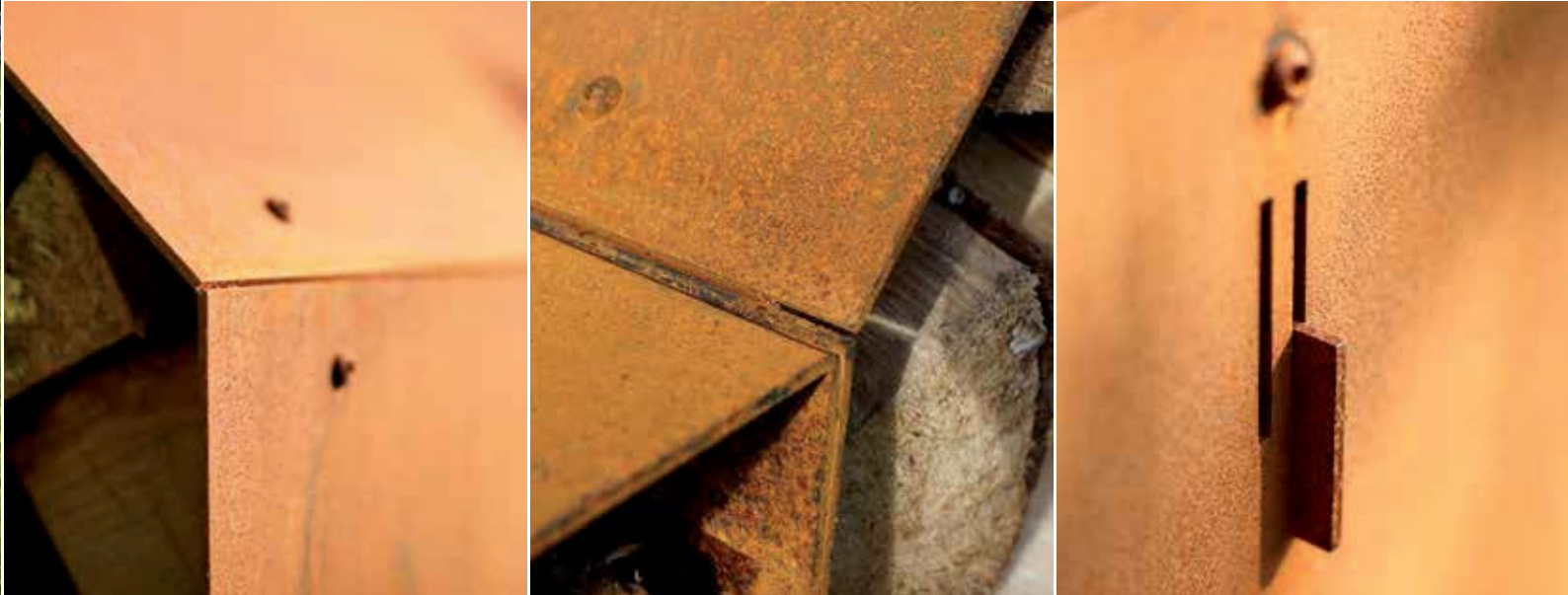
'Bruges' is a wood storage made from CorTen steel. Designed by the Belgian designer Jan Koppers (Koppers & Wuytens). The shape is inspired by the typical Belgian façade construction. When designing a simple production and assembly was central to the design. The basic package consists of 11 metal plates, so that they can be transported as a flatpack. The parts are easy to assemble; the roof is put into shape with a few bolts, the houses themselves get the necessary stability by sliding them together with connecting pieces, for which simple slots are provided in the sheet material.







The natural beauty of stacked wood combined with naturally rusted steel and a green environment give the wood storage more than just a functional function. It's a stylish, durable and well thought-out outdoor furniture that can be given a prominent and visible place in your garden.





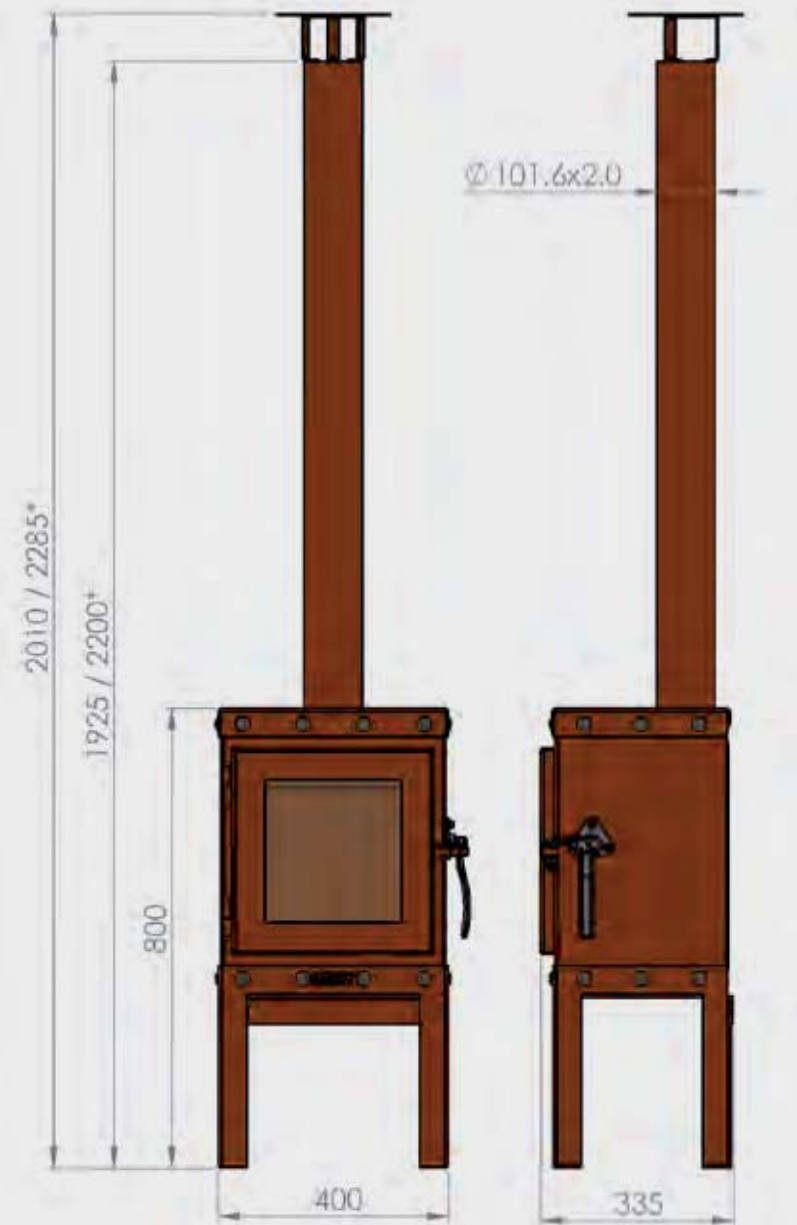
# PIQUIA

## Type:

Piquia 4 legs

## Options:

- \*Outlet extension (+275mm)
- Sparks catcher in the rainhood
- CorTen steel floor plate



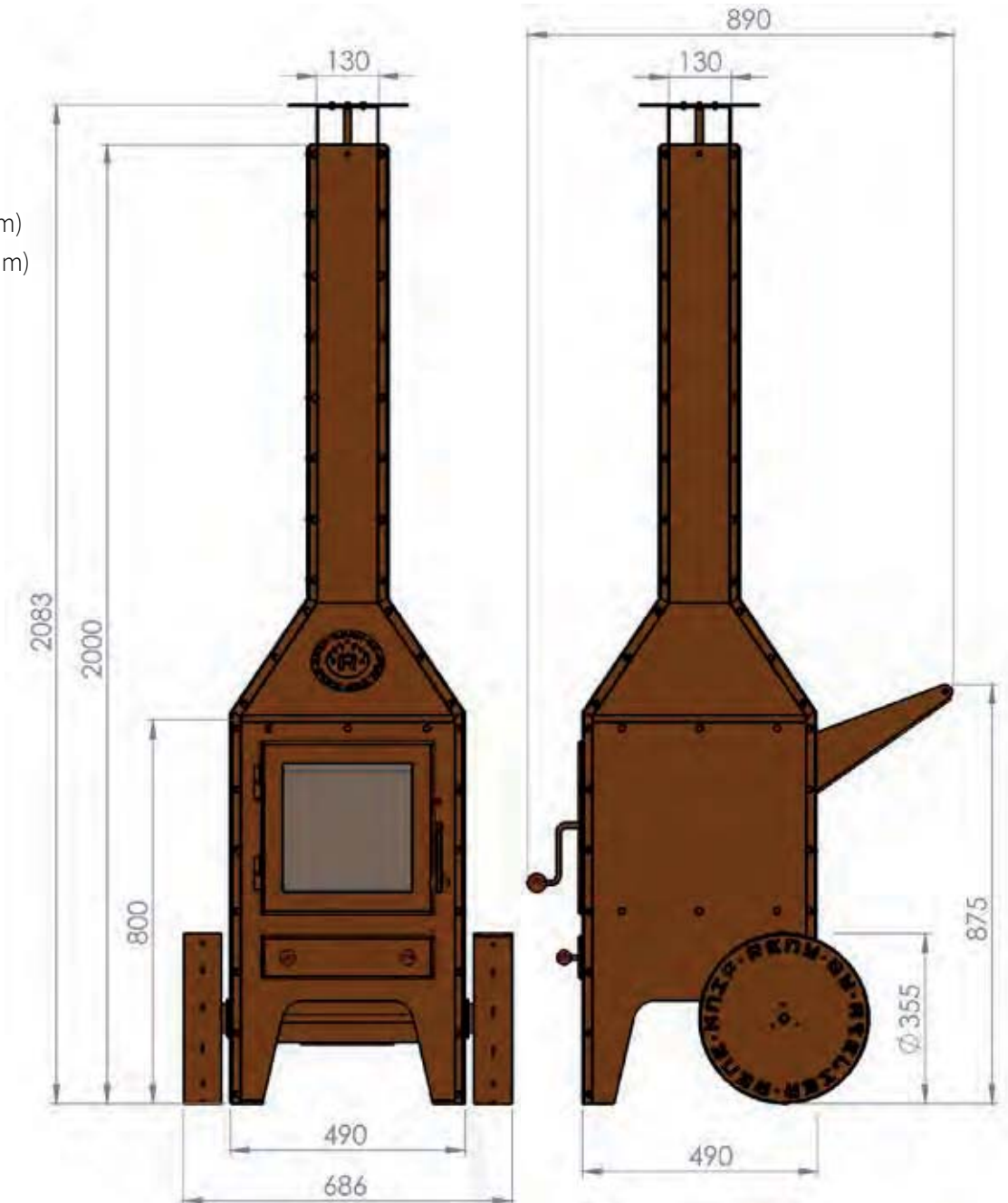
# BIJUGA

## Type:

Bijuga + wheels

## Options:

- Outlet extension (+ 500mm)
- Outlet extension (+1000mm)
- Sparks catcher in the rainhood
- CorTen steel floor plate





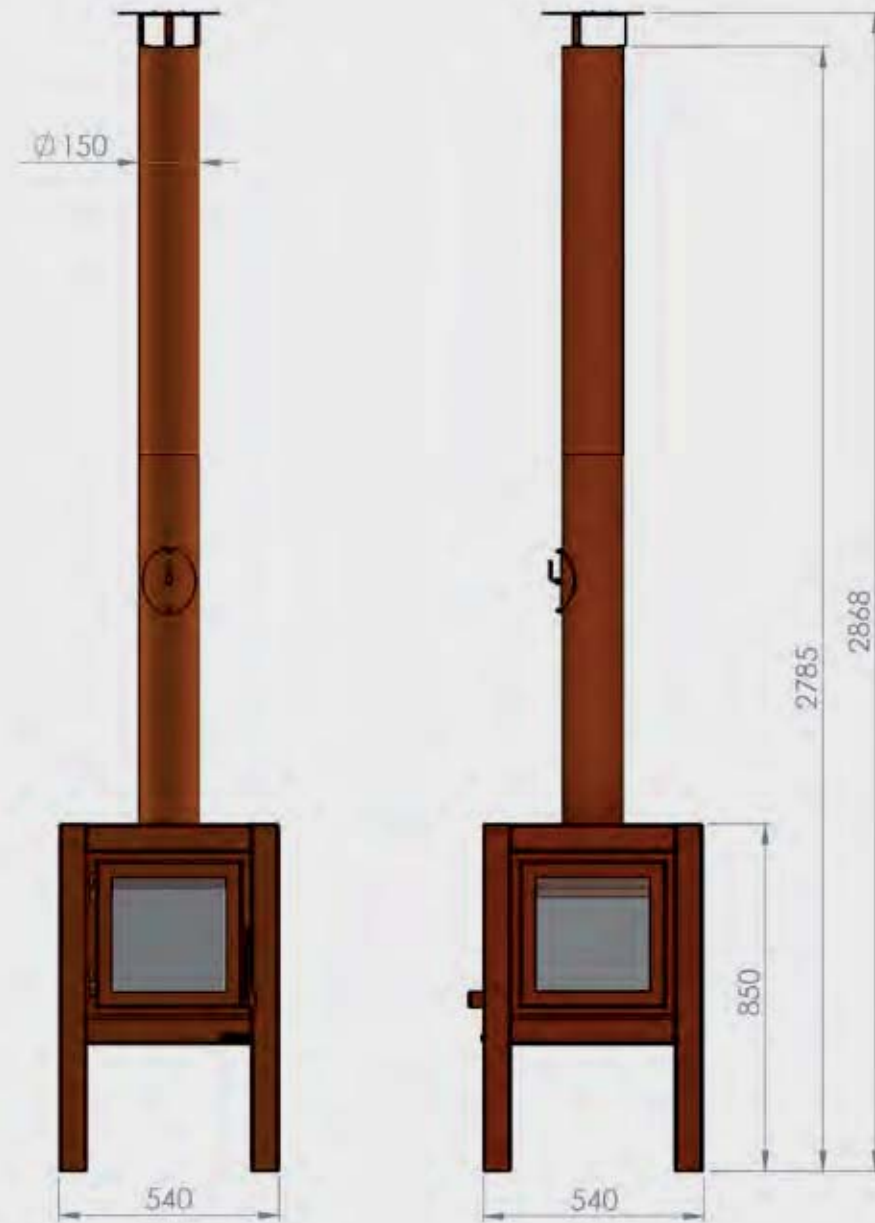
# QUARUBA L

## Type:

- Quaruba L
- Quaruba L mobile (+ wheels)
- 1 side glass (door)
- 2 sided glass
- 3 sided glass
- 4 sided glass

## Options:

- Elbow 45 degrees Ø 150
- Elbow 90 degrees Ø 150
- Extra outlet L=500mm / L=1000mm Ø 150
- Sparks cather in the rainhood
- Bottom plate + 4 wheels
- CorTen steel floor plate



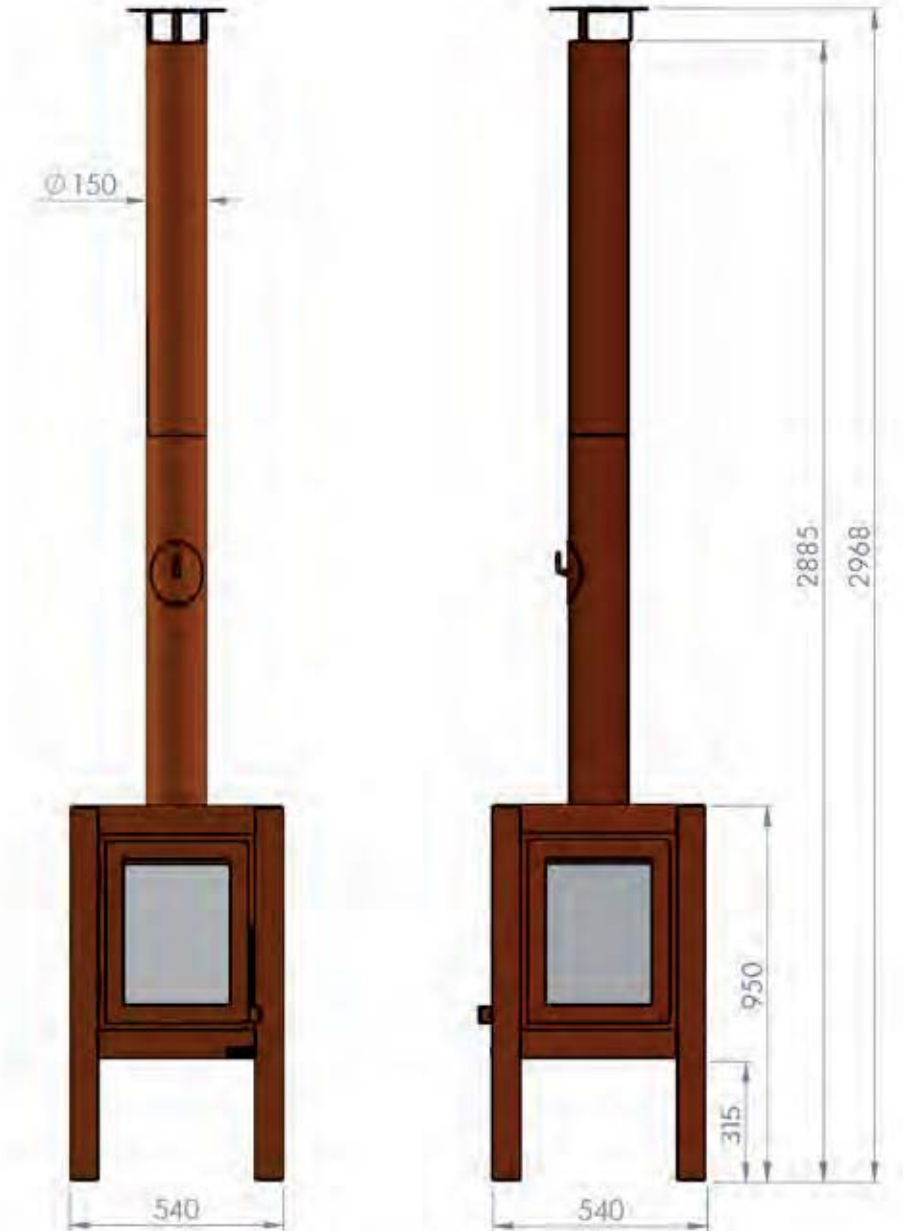
# QUARUBA XL

## Type:

- Quaruba XL
- Quaruba XL mobile (+ wheels)
- 1 side glass (door)
- 2 sided glass
- 3 sided glass
- 4 sided glass

## Options:

- Elbow 45 degrees Ø 150
- Elbow 90 degrees Ø 150
- Extra outlet L=500mm / L=1000mm Ø 150
- Sparks cather in the rainhood
- Bottom plate + 4 wheels
- CorTen steel floor plate





# QUARUBA XXL

## Type:

- Quaruba XXL
- Quaruba XXL mobile (+ wheels)
- 1 side glass (door)
- 2 sided glass
- 3 sided glass
- 4 sided glass

## Options:

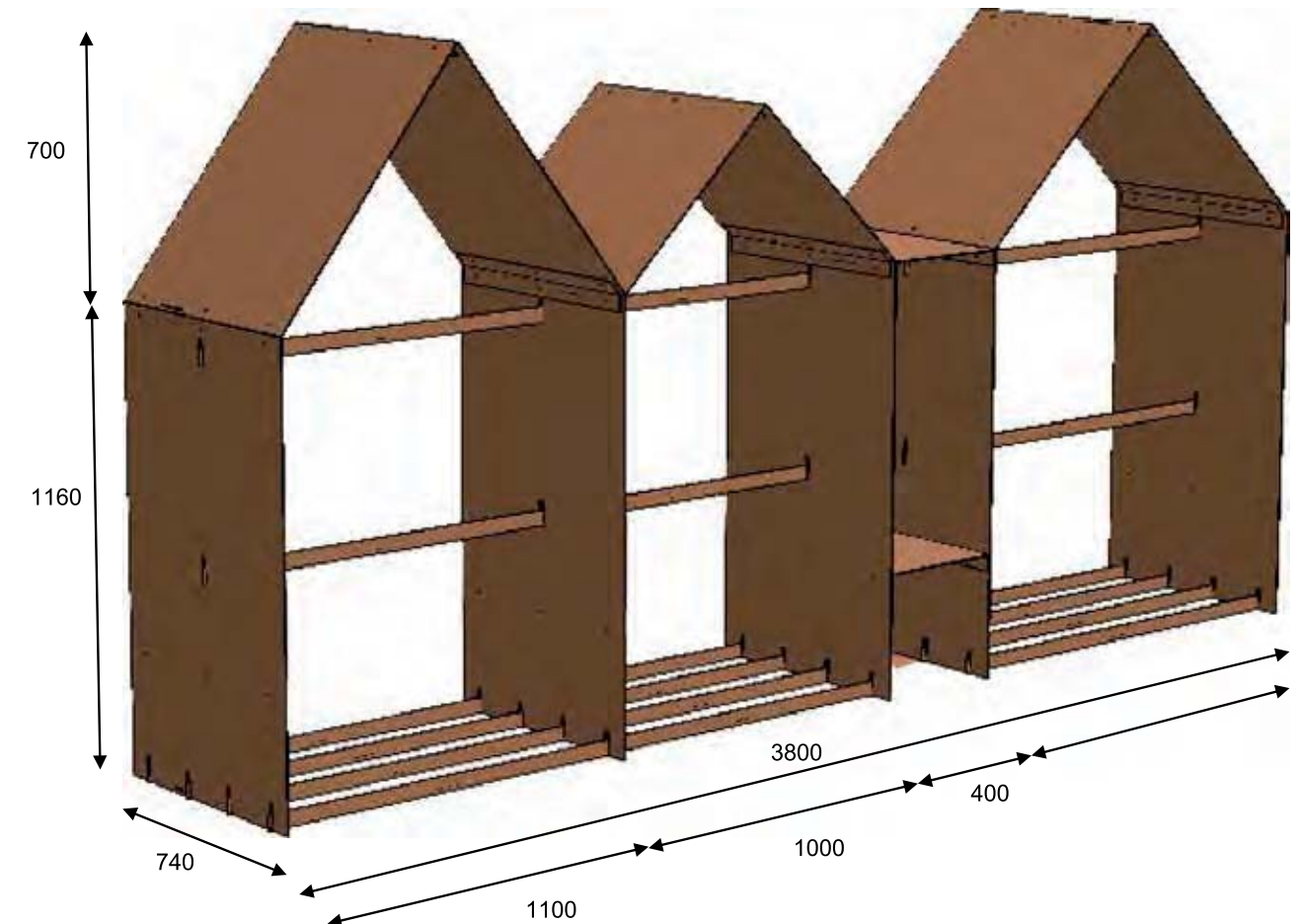
- Elbow 45 degrees Ø 150
- Elbow 90 degrees Ø 150
- Extra outlet L=500mm / L=1000mm Ø 150
- Sparks cather in the rainhood
- Bottom plate + 4 wheels
- CorTen steel floor plate



# WOOD STORAGE BRUGES

## Technical information:

- Material : 3mm CorTen steel
- Base: 3 modules + spacer (expandable with separate modules).
- Weight : 250 kg
- Volume : +/- 3.5 cubes







**RB73**

Hazenstraat 17  
5521 NJ Eersel  
The Netherlands  
info@rb73.nl  
www.rb73.nl

**Colofon**

Design      Bas Franken  
Photography   Bart Roos

**WWW.RB73.NL**



**WWW.RB73.NL**